
 [FACEBOOK.COM/DABOMBBIKE1998](https://www.facebook.com/DABOMBBIKE1998)

 [INSTAGRAM.COM/DABOMB_BIKES](https://www.instagram.com/DABOMB_BIKES)

 [YOUTUBE.COM/DABOMBBIKES1998](https://www.youtube.com/DABOMBBIKES1998)



[DABOMBBIKE.COM](https://www.dabombbike.com)



THE BEST WEAPON

PRODUCT CATALOG

Dealer, Distributor and OEM Inquiries are very welcome!

sales@hibike.com.tw / da.bomb@msa.hinet.net

 **DA BOMB**
BIKES

DA BOMB has specialized in Heavy-Duty Mountain Bike (MTB) with enthusiasm & innovation since 1998! We locate in Taiwan, where have a complete bike supply chain with the best quality. Downhill, Enduro, Cross Country, Dirt Jump, and even Gravel. Both we have no matter what you ride.

WE RIDE, WE DESIGN!

DA BOMB is born with the spirit to have high stability and great performance among our products that are unique and precise. We put emphasis on aesthetic values that express its fashion-driven originality and work hard to be a trend leader!

WE LISTEN, WE IMPROVE!

DA BOMB is a brand that has full passion for innovation and revolution. We sponsored lots of professional riders and competitions to test and gather feedback then incorporate their expectations into new creations. DA BOMB always strives to keep the improvement everyday.

WE GROW, WE ARE TRUSTED!

DA BOMB strives to extend the sphere of influence to the whole world. In all sincerity, we would like to service all DA BOMB fans in the world. We also possess the rich experience to fulfill the requests from OEM and ODM customers who trust our abilities and profession.

AND NOW, LET’S ROCK DA BOMB~!

WARNING

Bicycle must be assembled and checked regularly by a qualified mechanic. Always wear appropriate safety gear.

AND LISTEN TO YOUR MOTHER!

FRAME GEOMETRY CHART

Model Name	Riding Style	Frame Travel	Size (C to T)	Head Tube Angle	Horizontal Top Tube Length (mm)	Chain Stay Length (mm)	B.B. Height (mm)	Wheel Base Length (mm)	Head Set Size	SeatPost Size (mm)	Suggested Fork Travel (mm)	Reach (mm)	Stack (mm)
CHERRY BOMB 29	ENDURO	147mm	29"*M	65.5°	598.3	435	336	1184.9	ZS44/ZS56	30.9	140-160	442.2	627
		147mm	29"*L	65.5°	619.3	435	336	1206.1	ZS44/ZS56	30.9	140-160	459.2	636.1
SENTINEL 29	ENDURO	Hard tail	29"*15"	65.5°	561	445	328	1125	ZS44/ZS56	30.9	140-160	375.9	609.7
			29"*17"	65.5°	590	445	328	1155	ZS44/ZS56	30.9	140-160	399.5	623.4
			29"*19"	65.5°	618.8	445	328	1185	ZS44/ZS56	30.9	140-160	423	637
SONIC BOOM 26	DIRT JUMP	Hard tail	26"*12.8"	70°	604	318	293.5	1031	IS42/IS52	30.9	60-80	410	559
FOAB BOMB 26/275	DOWNHILL	8"	26"*16.5"	63.5°	590	435/445	342	1214	ZS44/ZS56	30.9	180-200	435	592
		8"	27.5"*16.5"	63°	591	445	345	1233	ZS44/ZS56	30.9	180-200	435	592
NEUTRON BOMB	GRAVEL	Hard tail	700C+*50	71°	525	435	291	1009	IS42/IS52	27.2	Hard tail	366	536
			700C+*53	71.5°	540	435	291	1020	IS42/IS52	27.2		376	552
			700C+*57	72.5°	580	435	291	1051	IS42/IS52	27.2		404	593
			700C+*59	72.5°	600	435	291	1071	IS42/IS52	27.2		418	613
BUNKER BUSTER 275	DOWNHILL	8.5"	27.5"*M	63°	566.5	450	355	1213	Φ 49.5mm	30.9	180-200	408.7	587.6
		8.5"	27.5"*L	62.5°	592	445	355	1240	Φ 49.5mm	30.9	180-200	433.5	595.3

DA BOMB Reserves The Right To Change Prices And/Or Specifications Without Prior Notice.

02 SPONSORSHIP

03 FRAMES

- 03 CHERRY BOMB 29
- 04 SENTINEL 29
- 05 SONIC BOOM 26
- 06 BUNKER BUSTER 27.5
- 06 NEUTRON BOMB 700C/700C+/650B
- ENDURO – Travel 147mm
- ENDURO – Hardtail
- DIRT JUMP – Hardtail
- DOWNHILL – CARBON – Travel 8.5"
- GRAVEL – CARBON – Hardtail

07 COMPONENTS

- 07 STEM
- 10 TRIBAL HANDLEBAR
- 12 HEADSET
- 13 GRIPS
- 14 HUB
- 16 RIM / WHEELS
- 19 THRU ALXE
- 20 SADDLE
- 21 CLAMP
- 22 SEATPOST
- 23 CHAIN GUIDE
- 24 PEDALS
- 26 BIKE KIT
- 28 ACCESSORY
- 30 RIDER APPAREL



SPONSORSHIP

TAIWAN SPONSORED RIDER JUSTIN

- 2022 — TAIWAN Kaohsiung MTB DH Racing - Elite (2nd place)
- 2021 — National Games New Taipei City Downhill Race (3rd place)
- 2020 — National High School Cycling Championships - Downhill (1st place)
- 2019 — SUPER-8 Enduro Festival - Junior (1st place)
- 2019 — National MTB Downhill Championships (3rd place)
- 2019 — GIANT Cup — Downhill Championships (3rd place)
- 2019 — National High School Cycling Championships (1st place)
- 2019 — WAR HORSE SUPERIDE Downhill Championship - KUNMING CHINA (2nd place)
- 2018 — Asia Greenland Downhill Championships - ZHONGHAN CHINA - U18 (6th place)
- 2018 — 3th Flying Dragon Cup Downhill Championships - Junior (1st place)
- 2018 — National MTB Downhill Championships - Junior (2nd place)
- 2017 — National Extreme Sports Championships - Junior (1st place)



Hello I'm Justin. I started riding since 6 years old. When I tried MTB for the first time, I fell in love and participated in several MTB events, no matter Enduro even Downhill. For the past 6 years, I was taught by Taiwan well-known MTB instructor (CHEN ZONG-QUAN). I always overcome every terrain to sharpen the riding skills. To draw on the experience and make up for my deficiency, wish to improve and rank among the best!

TAIWAN SPONSORED RIDER KEN CHEN

- 2022 — ENERGY HOUSE Extreme Sports Field (being instructor)
- 2019 — CHINA International Bicycle Fair (being performer)
- 2018 — TAIPEI Extreme Sports Race (being referee)
- 2017 — International Extreme Sports Competition BMX HU ZHOU (being referee)
- 2016 — TAIPEI Extreme Sports Race (being referee)
- 2015 — International Extreme Sports Competition BMX HU ZHOU (2nd place)
- 2011 — National Extreme Games BMX (2nd place)
- 2007 — Asian Indoor Games MACAU - Park Best Trick (Gold Medal)
- 2007 — Asian Indoor Games MACAU — Vert (Bronze Medal)



Hey guys I'm KEN. In early youth, I went in for lots of competitions in Asia, and the 2007 Asian Indoor Games was the proud moment that I got Gold medal! Although now I don't compete because of age, I'm always invited to be the referee in matches. Furthermore, I'm also the biking instructor of kids. I pass my experience on to the kids about basic tricks and concept, and I would like to positively popularize BMX and Dirt Jump in Taiwan!

BELGIUM SPONSORED RIDER DAVID DERYCK

- 2022 — Current Vice-Champion MDC Downhill Cup Masters
- 2018 — Crankworx 100% Dual Slalom (5th place Open)
- 2018 — UCI BMX Papendal Holland Pumptrack (4th place Overall)
- 2017 — European 4x Series Reutlingen (7th place Elite)
- 2017 — City Downhill Nijmegen International (10th place Pro)
- 2016 — MDC Spaarnwoude Holland (4th place Pro)
- 2016 — King of Pumptrack Zutendaal Benelux (1st place Overall)
- 2015 — 4X Pro Tour Malmedy Belgium (2nd place Open)



My name is David Deryck, mountainbiker and builder. I am a mountainbiker living in Belgium, competing in events all over Europe, from pumptrack to Downhill. Crankworx, 4X Pro Tour, Red Bull Pumptrack and much more. As much events, contests and jams I can fit in my schedule. My primary focus is getting this all documented and sharing this on social media as well as doing well in the results.

FRAME

CHERRY BOMB 29 – ENDURO

Like most cherries are tasty and sweet. Along with DA BOMB's proven horst linkage design, CHERRY BOMB is also ultra-aggressive that's made of Hydro-forming aluminum tube with smooth welding and also bending seat tube & down tube. It's always helping you go up over the hardest of times and being there for you also during the happiest of moments, that's more charming than all old cherries!

- Material:** Aluminum
- Size:** M / L
- Tapered Head Tube:** ZS44/ZS56
- Travel:** 147mm (Horst Linkage)
- Shock:** X-Fusion O2-PRO-RLX L210*TR55*M8 (FW22.2+RW22.2)
- Seat Post:** 30.9mm
- BB Width:** 73mm W/ISCG-05 mount
- Rear Dropout:** 148mm*12mm*P1.75 (Boost)
- Included:** Rear Axle / Clamp / Hanger
- Inner Cable Routing System**
- Weight (with shock):** 3650g (M) / 3710g (L)
- Max. size of Tire:** 29"*2.5"
- Color Available:** Matte Black / Matte Forest Green / Matte Ivory / Gloss Chameleon / Gloss Candy Purple



FRAME

SENTINEL 29 – ENDURO

SENTINEL is always responsible for multi-terrains exploration. It is made of square Hydro-forming Aluminum Tube that's high-strength but lightweight. Its bending down tube and bending seat tube offer extra impact resistance and also visual impact. Short chain stay, low BB, and slack head tube angle. SENTINEL aims for endurance and mobility, it's always standing by.

Material: Aluminum
Size: 15" / 17" / 19"
Tapered Head Tube: ZS44/ZS56
Seat Post: 30.9mm
BB Width: 73mm W/ISCG-05 mount
Rear Dropout: 148mm*12mm*P1.75 (Boost)
Included: Rear Axle / Clamp / Hanger
Post-Mount Disc Brake System
Inner Cable Routing System
Weight: 2340g (19")
Max. size of Tire: 29"*2.6"
Color Available: Matte Black / Matte Purple / Gloss Chameleon / Matte Bronze Orange / Gloss Candy Red



FRAME

SONIC BOOM 26 – DIRT JUMP

SONIC BOOM is a high-performance dirt jump frame. When you ride into the dirt jump, enhancing supportability is necessary. It is made of Aluminum that's rigid and responsive but lightweight, which is built for doing stunts, tricks, and go on rampaging. It is designed with all the new up-to-date dirt jump features such as a tapered head tube and super-short chain stay & wheelbase length. The rear dropouts sit on a horizontal sliding system for easy chain tensioning and chain length adjustments.

Material: Aluminum
Size: 12.8"
Tapered Head Tube: IS42/IS52
Seat Post: 30.9mm
BB Width: 73mm W/ISCG-05 mount
Rear Dropout: 135mm*10mm
Included: Clamp
Weight: 2320g
Max. size of Tire: 26"*2.35"
Color Available: Matte Black / Matte Violet / Gloss Amber / Gloss Sky Blue



FRAME

NEUTRON BOMB 700C/700C+/650B – GRAVEL

Gravel Bike is a combination of mountain bike and road bike, its frame clearances for wider tires which aims to meld on-road speed with off-road capability, and let the riders enjoy endless riding. The long head tube and shorter top tube allow the rider to move up the right position and body balance to adapt to multi-terrains. It features a comfortable geometry, and the lower BB provides stable riding.



Material: Carbon
Size: 700C/700C+/650B * 50/53/57/59cm
Tapered Head Tube: IS42/IS52
Seat Post: 27.2mm
BB Width: BB86
Fork Dropout: 100mm*12mm*P1.5
Rear Dropout: 142mm*12mm*P1.5
Included: Fork / Rear Axle / Clamp / Hanger
Inner Cable Routing System
Weight: 1600g
Color Available: Orange



BUNKER BUSTER 275 – DOWNHILL

As like BUNKER BUSTER, it has a rigid body to penetrate the underground structures. Its oversized head tube design can raise rigidity. Its 27.5" specification can let it behave better than 29er. It's started off from the highest place and goes through quickly to cross the finish line. Whatever the most extreme or horrendous conditions, still keep on your way and break every obstacle.



Material: Carbon
Size: L
Head Tube: Oversize ID49.5mm (ZS49/EC49)
Travel: 8.5 inches (4-Bar Linkage)
Shock: X-Fusion VECTOR AIR HLR L240*TR76 (FW26+RW48)
Seat Post: 30.9mm
BB Width: 83mm W/ISCG-05 mount
Rear Dropout: 150mm*12mm*P1.5
Included: Rear Axle / Clamp / Hanger
Weight: 4710g
Color Available: Yellow



FIST BUMP – DOWNHILL / ENDURO

FIST BUMP is made of aluminum with CNC Machined. Its unique cutout shape can reduce the maximum weight possible, while also maintaining maximum strength. Top-Gapless Design is a simple and effective way to install, and the Flange Design can spread the loads from the stem more evenly on the handlebar.

Material: Aluminum with CNC Machined
Bar Bore: 35mm
Extension: 35mm
Stack Height: 35mm
Steerer Dia: 1-1/8"
Angle: ± 0°
Weight: 149g
Color Available: Black / Purple / Silver / Jet Fuel (Oil Slick)



BERETTA – DOWNHILL / ENDURO

BERETTA is a wallet-friendly stem with 4 bolts handlebar clamp design. It is made of aluminum with 3D forged, which is high-strength and rigid but lightweight. Its 40mm short length extension can result in snappier steering, which can provide quicker handling characteristics and more responsive feel.

Material: Aluminum with 3D-Forged
Bar Bore: 35mm
Extension: 40mm
Stack Height: 40mm
Steerer Dia: 1-1/8"
Angle: ± 5°
Weight: 113g
Color Available: Black / Blue / Brown / Orange / Purple / Green



IMPACT STEM

IMPACT STEM

TURRET – DOWNHILL / ENDURO

TURRET – As its name, it has a tough shape then is fixed and starts attacks. It is made of aluminum by 3D forged with 4 bolts handlebar clamp design, which is durable. Its 35mm extension can offer snappier steering and stabilizes great handling, and let you dodge quickly and advance responsively.



Material: Aluminum with 3D-Forged
Bar Bore: 31.8mm
Extension: 35mm
Stack Height: 40mm
Steerer Dia: 1-1/8"
Angle: ± 0°
Weight: 145g
Color Available: Black / Purple / Red / Brown



MK2 – DOWNHILL / ENDURO

MK2 is made of aluminum with 3D forged process and also CNC Machined cutout can offer extremely lightweight but durable features. The 35mm extension stabilizes great handling also. A fun feature you can change the faceplate to achieve 16 Color Combinations from the current four anodized color options, and perfectly match your bike!



Material: Aluminum with 3D-Forged & CNC-Machined & High Polishing
Bar Bore: 31.8mm
Extension: 35mm
Stack Height: 40mm
Steerer Dia: 1-1/8"
Angle: ± 0°
Weight: 127g
Color Available: Black / Blue / Orange / Purple



MP8 – XC / TRAIL

MP8 is a simple and durable stem with offset -17°, which can lower the handle position to let you move forward stabler and more dexterous, which is exclusively designed for 29" XC riders! Top-Gapless Design is a simple and effective way to install that you fasten fully the top two bolts before tightening the lower two bolts.



Material: Aluminum with 3D-Forged
Bar Bore: 31.8mm
Extension: 60mm / 80mm
Stack Height: 32mm
Steerer Dia: 1-1/8"
Angle: -17°
Weight: 160g (60mm) / 168g (80mm)
Color Available: Black / Jet Fuel (Oil Slick)



SHARK – ENDURO / XC / TRAIL

The fighter's eyes and fearsome teeth – It features a classical but trending bold shark attack artwork that is famous on fighter planes. Giving you the courage invisibly and letting you be ever-victorious! It is made of Aluminum with 3D-forged, that's high-strength but lightweight.



Material: Aluminum with 3D-Forged
Bar Bore: 31.8mm
Extension: 60mm / 80mm
Stack Height: 40mm
Steerer Dia: 1-1/8"
Angle: ± 5°
Weight: 132g(60mm); 138g(80mm)
Color Available: Black

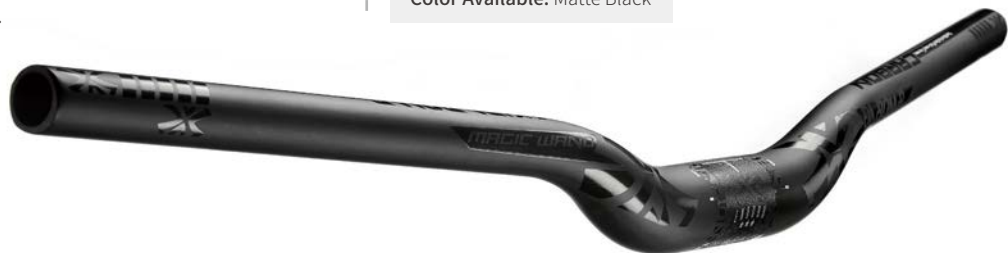


TRIBAL HANDLEBAR

MAGIC WAND – DOWNHILL / ENDURO

MAGIC WAND must be ultra-lightweight to let you carry to any extreme conditions and fight with you. Its one-piece monocoque carbon fiber construction with 35mm bar bore can offer incredible strength and durability for hardcore Downhill or Enduro riding but less than 300g! Btw, its non-slip clamping zone can be perfect grip your stem and let you stable riding. MAGIC WAND will be your best partner and always trustworthy.

Material: UD Carbon Fiber
Bar Bore: 35mm
Bar Rise: 30mm
Backsweep: 9°
Upsweep: 5°
Width: 800mm
Weight: 295g
Color Available: Matte Black



STINGER MISSILE – DOWNHILL / ENDURO

We marked the STINGER MISSILE crosshair as the middle point to let you easier mount. Its 35mm bar bore can offer more stability and durability, also its special geometry structure has cozy riding for riders in Enduro & Downhill racing. 800mm width wide bar can provide more responsive steering and more confidence in corners and across huge terrain for riders, so it's better for aggressive trail riding.

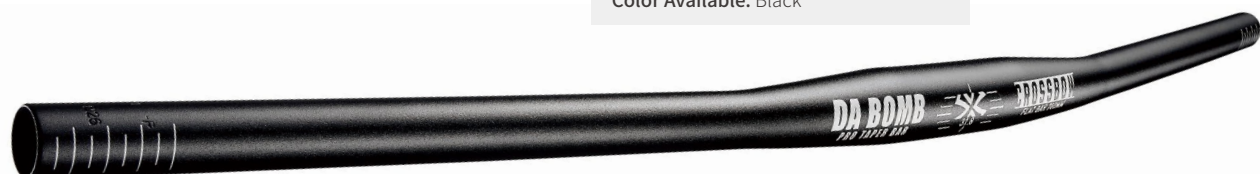
Material: Aluminum with Double-Butted
Bar Bore: 35mm
Bar Rise: 25.4mm
Backsweep: 9°
Upsweep: 5°
Width: 800mm
Weight: 380g
Color Available: Silver / Brown / Neon Yellow



CROSSBOW – XC / TRAIL

Perfect for 27.5" and 29" XC riders, CROSSBOW is a flat bar with modern geometry, which keeps your hand position down low that can let you easier into a forward body position and sprint to your target. It's lightweight (300g only) and extremely durable, and its 780mm width can offer exact control and comfortable ride also.

Material: Aluminum with Double-Butted
Bar Bore: 31.8mm
Bar Rise: 0mm
Backsweep: 9°
Upsweep: 0°
Width: 780mm
Weight: 300g
Color Available: Black



TRIBAL HANDLEBAR

APACHE-II – ENDURO / FREERIDE

As like its name "APACHE", you're given unlimited power to win over your competitors. You can use this ultimate handlebar to conquer any Enduro & Freeride competitions! We used super-strong, super-resistant, and super-stiff heat-treated double-butted aluminum to create it. We made no compromise when it comes to strength and stiffness.

Material: Aluminum with Double-Butted
Bar Bore: 31.8mm
Bar Rise: 25.4mm
Backsweep: 8°
Upsweep: 10°
Width: 800mm
Weight: 382g
Color Available: Grey / White / Red



TACTIC-II – DIRT JUMP / STREET

As like its name "TACTIC", you can carry out any tricks you want easily, also clearly! It is made of aluminum with double-butted, that's high-strength but lightweight. Combined with its SUPER HIGH 3" rise, it will be your perfect partner to show off your abilities!

Material: Aluminum with Double-Butted
Bar Bore: 31.8mm
Bar Rise: 3 inches (76.2mm)
Backsweep: 5°
Upsweep: 9°
Width: 760mm
Weight: 420g
Color Available: Black



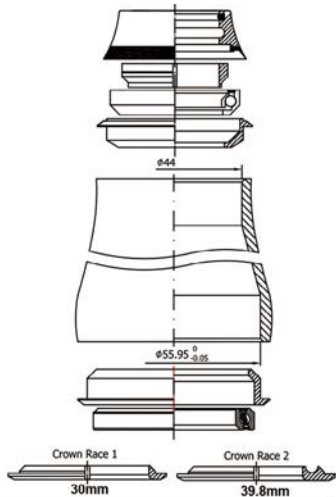
HEADSET

BOMB LOOP 4 IN 1

ALL HEADSETS IN ONE! It included 4 types of headsets but 1-set price only, which covers almost all the sizes/standards of the market and all the needs of riders. Depend on your Fork Crown Race of the Head Tube to pick the correct one from 30mm /39.8mm, and also depend on your demands from IS42 / IS52 / ZS44 / ZS56 to complete the set. Btw, for shops, it also solves to stock every kind each person needs!

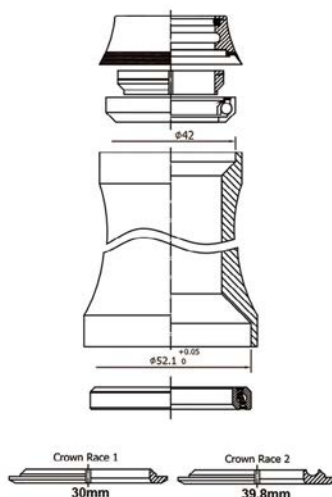


Material: Aluminum with CNC-Machined
Bearing: 45 degree
Crown Races: 30mm & 39.8mm
Weight: 135g
Color Available: Black



SHIS code 1: ZS44/28.6 | ZS56/40
 SHIS code 2: ZS44/28.6 | ZS56/30

1. INTEGRATED (IS42/IS52)
2. INTERNAL (ZS44/ZS56)
3. FOR 1.5" TAPERED STEERING TUBES
4. FOR 1-1/8" STRAIGHT STEERING TUBE



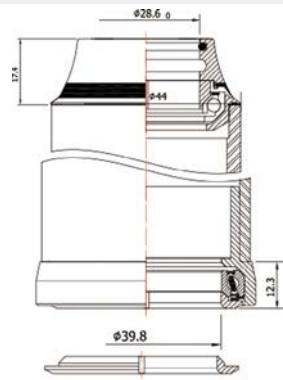
SHIS code 1: IS42/28.6 | IS52/40
 SHIS code 2: IS42/28.6 | IS52/30

BOMB LOOP EC49

Incredible BOMB LOOP EC49 with upper ZS44 & lower EC49 for tapered head tube conversion and longer bottom cup headset impose durability and long-lasting performance.



Material: Aluminum with CNC-Machined
Bearing: 45 degree
Crown Races: 39.8mm
Weight: 146g
Color Available: Black



ZS44/28.6 | EC49/40
 1-1/8" + 1.5" Taper Internal Headset

HEAD LOCK SV

Along with the normal function of star nut, you can put the front brake cable housing thru the headlock! We believe it is the main trend for next-generation assembly. It's an ideal condition for radical riders that the wires will behave no more tangle around. So let's have an epic ride now!

Material: Aluminum
Size: 1-1/8" diameter steerer
Included: Cr-Mo Steel Hollow Screw
Weight: 41g
Color Available: Black



BEER STEM CAP

It's boring to a normal stem top cap, why don't you get creative on it? Now this special stem top cap is designed for combining with any beer bottle cap. It's an ultra-cool design that all kinds of beer bottle caps in the market both can clip on it. Let's choose your favorite beer mark!

Material: Aluminum
Converted Size: 1-1/8" diameter steerer
Included: Stainless Steel Screw
Weight: 23g
Color Available: Black



GRIPS

HOLY SHIT 3.0 – MTB

HOLY SHIT! It's an ultimate grip that improved the function and ergonomics. Half-flange blocks your hand not your thumb, also combined with a vertical pattern that is perfect for controlling the shift lever smoothly. Its check pattern with knurl pattern bottom provides perfect tackiness and skidproof.

Material: Rubber Compound with Slip-Free Pattern Knobs
Length: 135mm
ID: 22.2mm
Weight: 113g
Included: Double Lock-Ring & Rubber End Plugs
Color Available: Black / Blue / Orange / Red / Gum Rubber / Army Green Camo



CROSS SHIELD – END CAP

CROSS SHIELD is designed exclusively for DA BOMB Lock-On Grip System. It can provide the high class of protection from crashes or impacts, which will be your best choice to upgrade and replace your original one. So you can throw your bike anywhere (just kidding haha)

Material: Aluminum
Weight: 30g/pair
Color Available: Black
Laser etched DA BOMB logo



BONBONS 2.0 – DIRT JUMP / BMX

Its criss-cross pattern is specially designed for increased absorption of impacts. The rubber compound has an anti-slip feature that will not let you down in the middle of your trickiest tricks. It can provide excellent control but extremely lightweight. With the BONBONS, you're ready to conquer the world!

Material: Rubber Compound with Slip-Free Pattern Knobs
Length: 140mm
ID: 22.2mm
Weight: 120g
Color Available: Black / Blue / Red / Purple



PARTICLE – MTB

As like its name "PARTICLE", its diamond knurl pattern improves grips and gives superior comfort. It included the single lock-on clamp, and also reinforced soft ends that provide much more protection from crashes or impacts.

Material: Rubber Compound with Slip-Free Pattern Knobs
Length: 135mm
ID: 22.2mm
Weight: 110g
Color Available: Black / Red / Neon Yellow / Purple



HUB

UFO2.0 F-15 BOOST – FRONT HUB

UFO2.0 comes with the Quadruple petal-flange design, which is the newest design that is used by DA BOMB only. It increases spokes rigidity while wheelset building, but the spokes won't overlap anymore and affect each other. And its airtight ratchet can be waterproof and dustproof more effectively also.



Material: Aluminum with CNC-Machined
O.L.D. : 148mm*12mm
Spoke Hole: 32H, 4 pawls, 36 ratchet teeth, 4 sealed bearings
Weight: 323g (HG) / 312g (XDR) / 312g (MS)
Color Available: Black
Compatible with:
 SHIMANO HG 10/11s
 SRAM XDR 11/12s
 SHIMANO MICRO SPLINE 12s

Material: Aluminum with CNC-Machined
O.L.D. : 110mm*15mm
Spoke Hole: 32H, 2 sealed bearings
Weight: 204g
Color Available: Black



One Body, Three Systems!

You can easier change the cassette body and convert it into other systems. No need to change the whole hub body anymore!

UFO2.0 R-148 BOOST – REAR HUB

UFO-EVO F-15 BOOST – FRONT HUB

UFO-EVO is a high-end straight-pull type hub and comes with ultra-precision 102T ratchet teeth, which can spread the loads more evenly and also provide quick engagement to get better power transmission. Its plug-in cassette can let it easier and quicker to maintain without tools.



Material: Aluminum with CNC-Machined
O.L.D. : 148mm*12mm
Spoke Hole: 28H, 6 pawls, 102 ratchet teeth, 5 sealed bearings
Weight: 284g
Color Available: Black
Compatible with: SRAM XDR 11/12s



Ultra-Precision 102 Ratchet Teeth!

You can enjoy better power transmission through faster engagement.

UFO-EVO R-148 BOOST – REAR HUB

Material: Aluminum with CNC-Machined
O.L.D. : 110mm*15mm
Spoke Hole: 28H, 2 sealed bearings
Weight: 132g
Color Available: Black

HUB

UFO F-15 – FRONT HUB

Material: Aluminum with CNC-Machined
O.L.D. : 100mm*15mm
Spoke Hole: 32H, 2 sealed bearings
Weight: 211g
Color Available: Black



UFO F-15 BOOST – FRONT HUB

Material: Aluminum with CNC-Machined
O.L.D. : 110mm*15mm
Spoke Hole: 28H / 32H, 2 sealed bearings
Weight: 211g
Color Available: Black / Jet Fuel (Oil Slick)



UFO R-142 – REAR HUB

UFO Hub series are both petal-flange designs that can increase spokes rigidity. And its special grease-filling port can let you easy to access for maintaining the ratchet without disassembling it. Also you can decide whether the hub operating sound is quiet or loud if you fill more or less grease.

Material: Aluminum with CNC-Machined
O.L.D. : 142mm*12mm
Spoke Hole: 32H, 6 pawls, 36 ratchet teeth, 4 sealed bearings
Weight: 294g
Color Available: Black



UFO R-148 BOOST – REAR HUB

Specification Available: SHIMANO HG 10/11s | SRAM XD/XDR 11/12s | SHIMANO MICRO SPLINE 12s
Material: Aluminum with CNC-Machined
O.L.D. : 148mm*12mm
Spoke Hole: 28/32H, 6 pawls, 36 ratchet teeth, 4 sealed bearings
Weight: 315g
Color Available: Black / Jet Fuel



UFO R-150/157 – REAR HUB

Material: Aluminum with CNC-Machined
O.L.D. : 150mm*12mm
Spoke Hole: 32H, 6 pawls, 36 ratchet teeth, 4 sealed bearings
Included: 157*12mm side cap
Weight: 306.5g
Color Available: Black



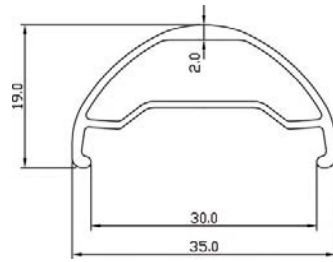
STRAFE R-10 – REAR HUB (BOLT-ON)

Material: Aluminum with CNC-Machined
O.L.D. : 135mm*10mm
Spoke Hole: 32H, 4 sealed bearings
Included: 10mm Bolts
Weight: 555g
Color Available: Black



RIM / WHEELS

ADVANCE Series are designed for MTB even E-BIKE. Its 35mm width can strengthen the whole rim and provide a greater contact patch, which puts emphasis on anti-impact. It's coming with Stainless Steel Eyelets, which can improve extra strength around the nipple hole. Btw, it's Tubeless Ready.



ADVANCE-26 – DIRT JUMP

Material: Aluminum
Size: 26" * 559 * 32H
Outer Width: 35mm
Inner Width: 30mm
EDR: 531.5mm
Height: 19mm
Weight: 485g
Color Available: Matte Black



DA BOMB RIM TAPE – for 27.5" Rim

Your most concealed weapon! Strong!
 Resistant! Durable!
Material: High Strength Tape



ADVANCE-29 – MTB / E-BIKE

Material: Aluminum
Size : 29" * 622 * 28H/32H
Outer: Width: 35mm
Inner: Width: 30mm
EDR: 594.5mm
Height: 19mm
Weight: 532g
Color Available: Red



ADVANCE-275 – DOWNHILL / FR

Material: Aluminum
Size : 27.5" * 584 * 32H
Outer: Width: 35mm
Inner: Width: 30mm
EDR: 556.5mm
Height: 19mm
Weight: 495g
Color Available: White / Neon Yellow / Neon Blue



ADVANCE-26 WHEELSET – DIRT JUMP

Rim: ADVANCE -26 (26" * 559 * 32H)
Front Hub: UFO F-15 (15mm Thru Type)
Rear Hub: STRAFE R-10 (Bolt-On Type)
Spoke: Black Stainless Steel 14G
Weight: 2.22kg
Color Available: Matte Black



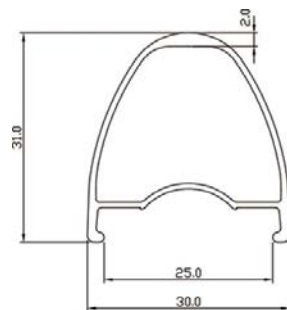
ADVANCE-29 BOOST WHEELSET – MTB / E-BIKE

Rim: ADVANCE -29 (29er * 622 * 28H/32H)
Front Hub: UFO F-15 BOOST (15mm Thru Type)
Rear Hub: UFO R-148 BOOST (12mm Thru Type)
Spoke: Black Stainless Steel 14G
Weight: 2.16kg
Color Available: Red



RIM / WHEELS

INSPIRE 29 are crossover rim we design, which is suitable for MTB even GRAVEL & E-BIKE. It is made of Special Niobium Alloy that can provide two-times strong tensile force than normal alloy. And its double-wall alloy extrusion let it more durable but still enough lightweight. Btw, it's TUBELESS READY.



INSPIRE-29 – MTB / GRAVEL / E-BIKE

Material: Special Niobium Alloy
Size : 29" * 622 * 32H
Outer: Width: 30mm
Inner: Width: 25mm
EDR: 570.5mm
Height: 31mm
Weight: 560g
Color Available: Neon Yellow / Red Orange / Grey



INSPIRE-29 BOOST WHEELSET – MTB / GRAVEL / E-BIKE

Rim: INSPIRE-29, 29er * 622 * 32H
Front Hub: UFO F-15 BOOST , 15mm Thru Type
Rear Hub: UFO R-148 BOOST , 12mm Thru Type
Spoke: Black stainless steel 14G
Weight: 2.22kg
Color Available: Neon Yellow / Red Orange



TUBELESS TOOL SET – for TUBELESS READY RIM

Tubeless Rim Tape is easier to apply and has high thermostability. Please wrap twice for each wheel then discharge all bubbles and reserve a hole for Tubeless Presta Valve.

Tubeless Tire Sealant's latex rubber and carbon fiber can repair the puncture rapidly. Please shake to let it well mixed before use.



Material: AL6061
Length: 45mm
W/valve cap tool(nylon)



Width: 30mm
Length: 10M



Capacity: 1000ML

THRU AXLE

QRLOCK (FRONT) – ENDURO / TRAIL

It's used for FOX forks in 110mm*15mm*1.5P , because QR thru axle is only provided in the high-end forks of FOX, but not in entry level. Btw, you can use it on the fork in the same specification as other brands if the same specification.

Material: Aluminum 7075
Dropout: M14 * Pitch 1.5 * L110mm
Weight: 88g
Color Available: Black / Gold



QRLOCK (REAR) – ENDURO / TRAIL

It's a patent Tool-Less Boost Thru Axle that you don't need to carry an extra Allen Key while riding. It's designed with a combined lever. You can pull the lever out, then quickly assemble (or disassemble) the axle. After tightening, it can be hidden and stay inside the axle body perfectly, and no need to worry about it will drop out and affecting the wheelset.

Material: Aluminum 7075
Dropout: M12 * Pitch 1.75 * L184mm
Weight: 64g
Color Available: Black
Included Extra 6mm Spacer for Length Range of Dropout: 178~184mm



R-148 BOOST THRU AXLE / R-142 THRU AXLE – ENDURO / TRAIL / E-THRU

It's fully enclosed and threaded into the frame to eliminate the change for the hub to move massively enhancing the strength and stability, but still lightweight because of Hollow Lightweight design. It's used on Enduro or FreeRide even E-Thru System!!

Material: Aluminum 7075
Dropout: M12 * Pitch 1.75 * L184mm
Weight: 46g
Color Available: Black



Material: Aluminum 7075
Dropout: M12 * Pitch 1.75 * L174mm
Weight: 43g
Color Available: Black



R-150 THRU AXLE – DOWNHILL

It is built tough to withstand the most hardcore downhill abuse!

Material: Aluminum 7075
Dropout: M12 * Pitch 1.5 * L187mm
Weight: 52g
Color Available: Black



R-142 QR THRU AXLE – ENDURO / TRAIL

It can increase the stiffness and rigidity of your frame, and also easier to adjust the ideal position. Btw, it's fully compatible with the Shimano E-Thru System.

Material: Aluminum 7075
Dropout: M12 * Pitch 1.75 * L174mm
Weight: 78g
Color Available: Black



SADDLE

FLAP-X – MTB

Like the plane flap assists in uphill (take-off) or downhill (landing). Its cover is made of AirForm which can provide an extra 30% shock absorbent than PU to aid in general comfort, and its base can provide the best impact resistance also. An extra skidproof strip can grip your ass from behind, so you can be confident to ride uphill.

Material: Nylon Fiber Injection with AirForm
Cr-Mo Steel Rail: 7mm
Size: 270*144mm
Weight: 319g
Color Available: Red / Orange / Blue / Black



MOTION – MTB

Open channel design provides not only lightweight but also adequate ventilation to pressure relief for longer riding. Its wider width and shorter nose saddle support the sit bones and less rubbing on the inner thighs. Also, its airfoam material with better flexibility can offer all-day riding efficiency.

Material: Padding fill in by Airfoam
Cr-Mo Steel Rail: 7mm
Size: 242*145mm
Weight: 256g
Color Available: Black / White / Red / Yellow



MARK 2 – SINGLE-BOLT

Have a close look at this CNC-Machined single-bolt seat clamp: every detail has been designed to make it the most lightweight, efficient, and essential. Its chamfered edge and offset inner bore design protect the seat post and the seat tube from friction.

Material: Aluminum with CNC-Machined
Size: 34.9mm
Weight: 27g
Color Available: Black / Blue / Red / Silver



SADDLE / CLAMP

BADASS – DIRT JUMP

BADASS can let you easier do any stunts, tricks and go on rampaging. Its wider width and shorter nose saddle support the sit bones and less rubbing on the inner thighs. Its anti-impact hard rubber at the back of the bottom can let your hand hold also. Let's be a BADASS (?)

Material: High Density Foam with Kevlar
Cr-Mo Steel Rail: 8mm (Reinforced)
Size: 248*140mm
Weight: 352g
Color Available: Black / Camo / Lime



DIRT DEVIL – MTB

DIRT DEVIL has a scratch-resistant embossed PU cover of Colorful and Black two versions. Super-comfy high-density foam with pressure-relax ergonomics fillster design can give bikers more cozy rides. Also its injected nylon-fiber core provides maximum rigidity.

Material: High density foam with PU
Cr-Mo Steel Rail: 7mm w/dual color process
Size: 280*145mm
Weight: 290g
Color Available: Colorful / Black



BOMB QR CLAMP 3.0P – QR

The EVO Edition of CNC-Machined clamp - MARK 3 (left) & BOMB QR CLAMP 3.0P (right)! We added the Water-Repellent functional parts to prevent mud and dust flow into the seat tube. Its chamfered edge and offset inner bore design also protect the seat post and the seat tube from friction. We also select a special surface finish - QR lever with "MATTE" and body with "GLOSS".

Material: Aluminum with CNC-Machined
Size: 34.9mm
Weight: 47g
Color Available: Black / Red / Blue

MARK 3 – SINGLE-BOLT

Material: Aluminum with CNC-Machined
Size: 34.9mm
Weight: 27g
Color Available: Black



SEATPOST

ROCKET – ENDURO / TRAIL

ROCKET is a height-adjustable dropper by Air/Oil Cartridge. You can position your saddle height freely and easily according to the terrain you meet, and act the technical sections in the trail. You just need to operate via the Shifter-Style Remote Lever but no need to take your hands off the handlebar that is safer and more fun while riding.

Material: Aluminum
Air/Oil Cartridge
Travel: 150mm
Post Length: 430mm
Offset: 0mm
Size: 30.9mm / 31.6mm
Weight: 635g (31.6mm)
Internal Cable Routing



HELLFIRE – DOWNHILL / XC

HELLFIRE is a 3D-Forged one-piece seatpost with CNC Machined cutout to make for a great balance between lightweight and stiffness. It's offset by 10mm so you can be more flexible to adjust your riding position to suit your frame. And its 2-bolts saddle clamp is designed to ensure an easy setup and let your saddle stay put. Btw, it's coming with a low-profile decal design and becomes elegant.

Material: Aluminum with 3D-Forged
Post Length: 350mm
Offset: 10mm
Size: 30.9mm / 31.6mm (27.2mm can be available by order)
Weight: 257g (30.9mm) / 283g (31.6mm)



THRUSTER – DOWNHILL / XC

THRUSTER features a 3D-Forged tube for increased strength. Its 2-bolts saddle clamp can adjust the saddle angle and also steadier bolt the saddle. Different size options in 27.2mm / 30.9mm / 31.6mm to let you select.

Material: Aluminum with 3D-Forged
Post Length: 350mm
Offset: 0mm
Size: 27.2mm / 30.9mm / 31.6mm
Weight: 284g



GSX 3 IN 1 – DOWNHILL

It is a fully-functionally combination, which includes the chain guide, bash guard, and chain tensioner. The top chain guide reduces the dropping chain and stables the works, its lifting upper slider is for chain adjustment. The great strength firm bash guard is able to resist impacting. And the detachable lower roller will act as a chain tensioner.

Material: Aluminum with CNC Machined
For 7-12 speed
ISCG-05 System
Chainring capacity: 28T-36T
Weight: 118g



GSX 2 – ENDURO

It is a fully-replaceable combination, which includes the chain guide and bash guard. The adjustable Upper Slider can let you lift at a suitable angle and be effective to prevent chain drops. The replaceable bash guard can protect your chainring from big impacts, such as rocks or boughs. And you only need to replace the bash guard if crushed.

Material: Aluminum of Body / Fiber-Reinforced Plastic of Guard
For 7-12 speed
ISCG-05 System
Chainring capacity: 30T-38T
Weight: 72g



SCG – ENDURO

It is a tough chain guide that's simple, efficient, and lightweight. You don't need to remove your crank for assembling or disassembling. It can be used on standard chainring even oval chainring, and it will prevent any chain drops.

Material: Nylon with Carbon Fiber Injection
For 9-11 speed
ISCG-05 System
Chainring capacity: 28T-36T
Weight: 28g



ISCG05 ADAPTOR – ENDURO / TRAIL

It allows for mounting of ISCG-05 to a frame with BB mount.

Material: Aluminum with CNC-Machined
Weight: 31g



CHAIN GUIDE

PEDALS

BLOCK – DIRT JUMP / XC

As like its name “BLOCK”, it's thick and durable that you can step on it trustfully. Its nylon cylindrical pins can avoid causing serious wounds on your legs but still can provide the maximum grip possible. Because the pedals are not the standard equipment on frame selling from almost all brands normally, it is budget-friendly and entry-level pedals for beginners!



Material: Nylon Fiber
Axle: Cr-Mo Steel with CNC machined
Platform Size: 114*100mm
Thickness: 24mm
Bearing: Loose Ball Bearing
Included: Reflectors *4pcs
Weight: 388g/pair
Color Available: Black / Blue / Orange / Gum Rubber

POPSICLE – DOWNHILL / XC

As like its name “POPSICLE”, it's colorful and has lots of taste. It's different from our current models, which use the Oversize Bearing with Needle Bearing & Sealed Bearing, and also combines the high-strength Cr-Mo Steel Axle with heat treated and CNC-Machined. Its Nylon Composite Body features Low-profile and Large platform size is pretty practical and durable but still lightweight. It's coming with replaceable anti-slippery pins, which can provide great traction and grip also.



Material: Nylon Composite
Axle: Cr-Mo Steel with CNC machined
Platform Size: 105*114mm
Thickness: 14mm
Bearing: Oversize Bearing, Needle Bearing, Sealed Bearing
Weight: 342g/pair
Color Available: Black / Blue / Orange / Purple / Yellow

PEDALS

AT MINE – DOWNHILL / XC

AT-MINE is always trustworthy that's enough rigid but lightweight. It is made of Aluminum with 16mm thickness. Its CNC cutout shape can increase great traction and reduce the maximum weight possible (Less than 400g/pair!). Its wider platform and replaceable pins provide perfect grip to your shoes. Its CNC Cr-Mo Steel Axle with two sealed bearings and DU makes sure it's durable.



Material: Aluminum with CNC Machined
Axle: Cr-Mo Steel with CNC machined
Platform Size: 110*110mm
Thickness: 16mm
Bearing: Two Sealed Bearings, One DU
Weight: 398g/pair
Color Available: Black / Brown / Orange / Purple / Jet Fuel (Oil Slick)

DOUBLE CROSS – DOWNHILL / XC

DOUBLE CROSS included the LSL bushing and sealed bearing. And the axle is made of high-strength Cr-Mo Steel with heat treated and CNC-Machined. Its wider platform is slightly concave in the surface that provides give maximum support while stepping on it. It's coming with replaceable cylindrical pins, which can provide great traction and grip, but also decrease the risk to get hurt. Importantly, it's budget-friendly, which seems like a CNC pedal but at Die-Casting pedal's price.



Material: Aluminum with Die-Casting
Axle: Cr-Mo Steel with CNC machined
Platform Size: 112*110mm
Thickness: 13mm
Bearing: LSL Bushing, Sealed Bearing
Weight: 443g/pair
Color Available: Black / Blue / Red

VS 50 – DOWNHILL / XC

VS-50 is a budget-friendly pedal but enough durable and strong. Its axle is made of high-strength Cr-Mo Steel with CNC-Machined. It's coming with replaceable cylindrical pins, which can provide great traction and grip, but also decrease the risk to get hurt. Btw, we released neon color with painting surface treatment, and let your bike look smart.



Material: Aluminum with Die-Casting
Axle: Cr-Mo Steel with CNC machined
Platform Size: 111*108mm
Thickness: 17mm
Bearing: Loose Ball Bearing
Included: Reflectors *4pcs
Weight: 450g/pair
Color Available: Black / Neon Yellow / Neon Orange



BIKE KIT

X-RING – BOOST CHAINRING

Almost all riders nowadays will purchase a complete bike directly, but its original gear ratio isn't suitable for everyone. So X-RING Chainring is a good choice to solve this situation. Its Narrow-Wide Tooth Design maintains firmly your chain in place and thus reduces greatly the risks of chain dropping/offsetting.

Material: Aluminum 7075 with CNC-machined
BCD: Direct Mount
Offset: 3mm
BOOST 148 Compatible
Teeth: 30T / 32T / 34T
Weight: 68g (32T)
Color Available: Black / Purple



X-ORBIT – OVAL CHAINRING

Oval Chainring uses for minimizing the “dead spot” in the pedal stroke, especially pedaling at 180 degrees and 270 degrees, which can reduce knee loading. It's for all cranks with 104 BCD interface to improve traction and climbing abilities, which optimizes your pedaling power. Its narrow-wide tooth design throw out chain drop with the perfect chain mesh fit also.

Material: Aluminum with CNC-Machined
BCD: 104mm
Teeth: 34T / 36T
Weight: 51g (34T) / 59g (36T)
Color Available: Black



EAGLE EYE – OVERSIZE PULLEY

Improving the issue of original parts that can't rotate freely when dirt or water gets inside. It can reduce the friction and resistance between the chain and rear derailleur. That means the chain can work smoother and unhindered, also improve the performance of variation in speed, uphill especially. And its narrow-wide tooth design can throw out chain drops with the perfect chain mesh fit.

Material: Aluminum
Included: 14T & 16T Pulley
Weight: 28g
Compatible System: SHIMANO 12S
Color Available: Black / Gold / Purple



SCROLL – DOWNHILL

SCROLL allows you to reduce your available gears in order to get a more responsive shift system, and let it become lightweight with less vibration. Although it targets mainly Downhill riders, it can also be used on the road bike. It is made by CNC-machined for increased toughness.

Material: Aluminum with CNC-Machined
Weight: 39g
Compatible System: SHIMANO
Color Available: Green / Blue / Red / Black



BIKE KIT

TO ONE KITS – DIRT JUMP / STREET

Changing the cassette can be annoying sometimes, that's why DA BOMB created the TO ONE KITS. It's simple to convert a multi-speed hub cassette into a single-speed, which can save you time and work.

Material: 2 spacers in Aluminum
 / Cr-Mo Steel Lock Ring & 14/16T Sprocket
Weight: 75g
Color Available: Black



RL-X – DIRT JUMP / STREET

RL-X is the Single Speed Chain Tensioner with multi-segment tension adjustment and double spring chain guide, so you can increase the chain tension but no need to change another chain. Easily assemble on the derailleur hanger whether Bolt-on type or thru-axle you're using, also whether Horizontal Dropout or Vertical Dropout.

Material: Aluminum with CNC-Machined
Weight: 121.5g
Color Available: Black



D-HANGER – DIRT JUMP / STREET

D-HANGER allows you to mount a rear derailleur on the horizontal-dropout frame. Like all the DA BOMB products, it has been engineered, designed, and built with riders in mind: the D-Hanger is tough, reliable, and super-convenient.

Material: Aluminum
Size: 10mm axle



HCT – DIRT JUMP / STREET

HCT is a heavy-duty chain tensioner made for horizontal-dropout frames with 10mm axles. This might be a small piece of equipment, but it's a concentration of DA BOMB experience and know-how in Street/DJ.

Material: Aluminum
Weight: 71.5g



ACCESSORY

BUNKER 2 – DOWNHILL / ENDURO

Fork Mudguard comes with three snap rings to fit your bike that is easy to install and offers the best protection from mud sprayed out by the front wheel.

Material: Nylon & Neoprene
Size: 125*105mm (small) for fork travel 90-140mm
 160*105mm (large) for fork travel 140-200mm
Color Available: Black



Downtube Mudguard is anti-slip and flexible to fit most bike frames, and it prevents scratches to the downtube of the frame, the carbon frame especially!

Material: Nylon & Neoprene
Size: 275*95mm
Color Available: Black



BOMB FENDER – MTB

FENDER can efficiently prevent mud/ water/ rocks from clogging the rear shock or hitting the frame. That can avoid mud spreading on your eyes or even on your ass haha. This portable blade design is extra light and thin and also simple installation and uninstallation for any specific occasion.

Color Available: Black
 2pcs / pack



PROTECTOR RING – MTB

PROTECTO RING is made to defend your bike chainstay or entire frame from attacks of rocks without scratches covered, which can fit MTB and road bikes. Simple yet efficient!

Color Available: Black / Red / Blue / Neon Green
 4pcs in same color / pack



SKULL VALVE – SCHRADER / AMERICAN VALVES

It's all about the attitude: get more confidence and scare your enemies with these skull-shaped valve caps!



CROSS VALVE – SCHRADER / AMERICAN VALVES

DA BOMB exclusive valves! LET'S ROCK DA BOMB!



MAGNETIC MOUNT WATER BOTTLE – MTB, ESPECIALLY ENDURO

DA BOMB water bottle combined with licensed magnetic bracket by FidLock (Germany). It's specially designed for Enduro or small-size frames because their middle suspension takes up lots of space and lets the water cage have no effect. Its strong magnets can fix secure locking, so you can quickly take and attach the bottle to the magnetic mount.

Material: Polypropylene with BPA-free
Temp: -5 °C to 50 °C
Capacity: 21oz/600ml
Weight: 164g
Color Available: Clear Black



CARTRIDGE CASE

This compound water bottle cage comes with a built-in handy Tool Case, Mini Box, and Integrated Tire Lever. It included precision mini tools that are convenient for precise adjustments. It's easily accessed with a simple push and is perfect to fill all your road repair needs.

- **Tool Case** included Phillips + Slotted + Hexagon + T15 + T20 + T25.
- **Mini Box** included Spoke holder + Chain pin breaker, and some space to put your personal items e.g. cash.
- **Integrated Tire Lever** with Allen key set (size: M3 / M4 / M5)

Material(Bottle Cage): Nylon Fibere
Material(Tools): Cr-Mo Steel
Weight: 143g (with tools)



BOMB BOY WATER BOTTLE – JET VALVE DESIGN

If you ride DA BOMB and want to be like the Bomb Man, you got to have the cool DA BOMB water bottle. It is made of 100% BPA-free Polypropylene, and its 550ml capacity can quench the thirstier and easier fix on your bike. Its JET valve cap can offer 100% leak-proofs, even if you unlock the cap and invert the bottle without pressing!

Material: Polypropylene with BPA-free
Temp: -5 °C to 50 °C
Capacity: 550ml
Color Available: Clear Black / Transparent White



BOMB STICKER SET

Hologram Stickers will change to different rainbow colors when you see them from different viewpoints under the sunlight (or lights). It's a good idea to decorate your Bike / Van / Shop with them!

STICKER SET (for Fans) - Included:
 - 1pc in 17cm * 4cm
 - 2pcs in 14.5cm * 3.5cm
 - 5pcs in 6cm * 4cm

STICKER SET (for Shop / Van) - Included:
 - 1pc in 17cm * 12cm



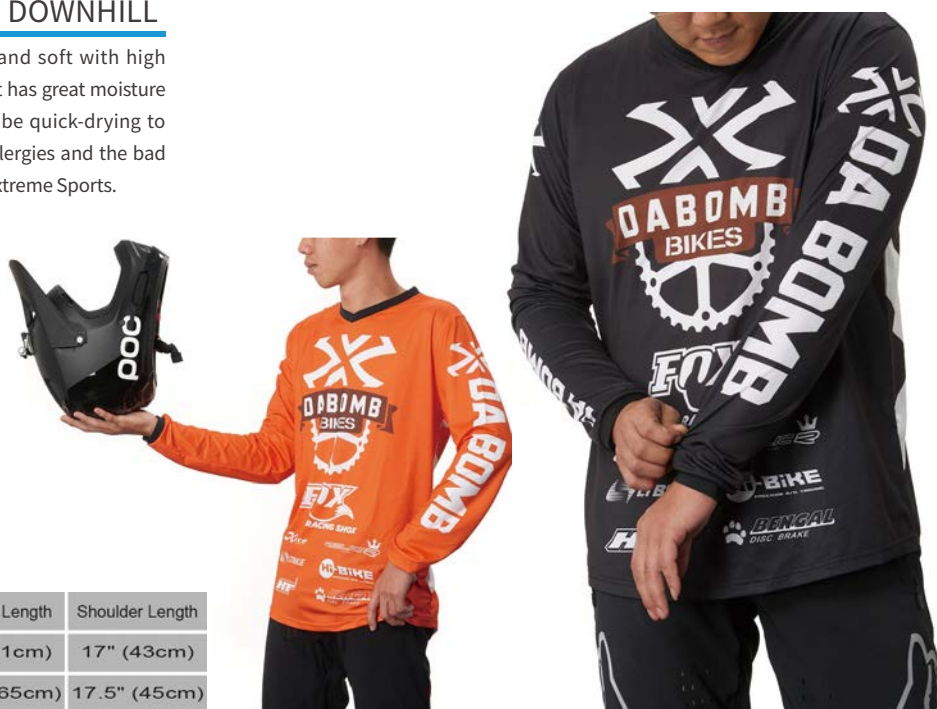
ACCESSORY

RIDER APPAREL

BOMB RACING TEAM JERSEY – DOWNHILL

It is made of 100% Polyester, which is smooth and soft with high elasticity, and also not easy to wrinkle and shrink. It has great moisture absorption and perspiration capacity, which can be quick-drying to keep your skin much more comfortable without allergies and the bad smell of perspiration. That's absolutely perfect for Extreme Sports.

Material: 100% Polyester
Available size: S / M
Color Available: Black / Orange



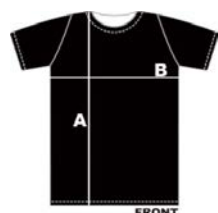
SIZE	Chest Width	Jersey Length	Sleeves Length	Shoulder Length
S	20" (51cm)	28" (71cm)	24" (61cm)	17" (43cm)
M	22" (56cm)	29" (74cm)	25.5" (65cm)	17.5" (45cm)

TECHNICAL TEE – FREESTYLE

Material: 100% Polyester
Available size: S / M / L
Color Available: Black (HOLD MY BEER)
White (THE BEST WEAPON at DA BOMB!)



SIZE	A	B
S	61cm	52cm
M	63.5cm	53cm
L	65.5cm	56cm



TEAM CREW SOCKS

TEAM CREW SOCKS has a 7-inch cuff that offers the maximum protection possible to avoid the gash from the pedals. It is engineered with firm compression and thick profile for high-class protection and comfort but features mesh zones for breathability. It's also engineered with micro-flexible sock sole for shock absorption and protecting your arch.

Material: 83% Cotton + 7% Nylon + 10% Spandex
Free Size in 25-30cm
2 pairs/pack in two styles



RIDER APPAREL

TEAM CAP

Do you think the sun is too bright when standing on the podium to get your medals? Let us wear a Team Cap. It has 3D embroidered DA BOMB team graphics, and comes with an adjustable snapback that one size fits most!

Material: 100% Polyester
Size: Adult (one size fits most)
Color Available: Black



ACCESSORY

BANNER

DA BOMB Precision Hardware Banner with "THE BEST WEAPON" Slogan. Fly high the colors of your favorite brand!

Size: 200*50cm

Color Available: Purple / Grey

FLAG KITS

DA BOMB FLAG WITH LOGO DESIGN

Size: 307*69cm

(Not included the alloy base)

